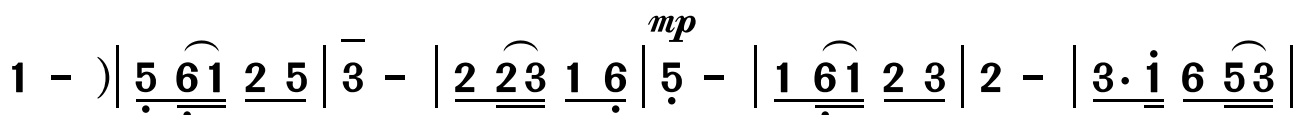
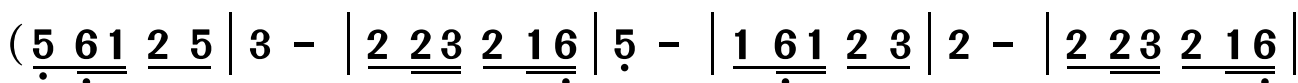


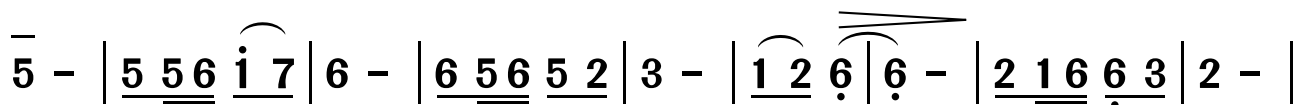
山水南充是我家

袁龙 词
袁龙 曲

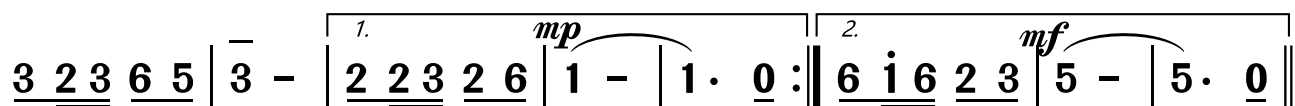
1 = F $\frac{2}{4}$
♩ = 63 亲切 抒情地



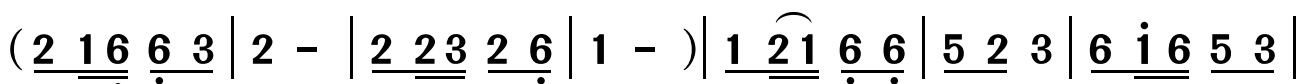
1. 六百里水路，里里是我家。洁白的浪花，朵朵放光
2. 六百里水路，处处是我家。山水如佳境，南充是我



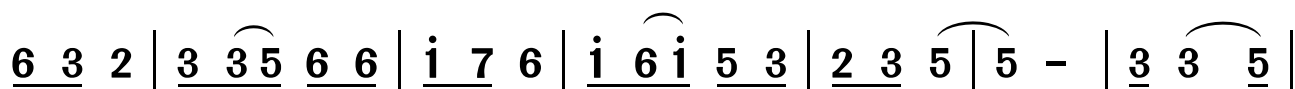
华。俊俏的伊人，你可在岸上住？那对美丽的双女石，
家。摇撻的小伙，你可有意中人？那片美丽的红枫林，



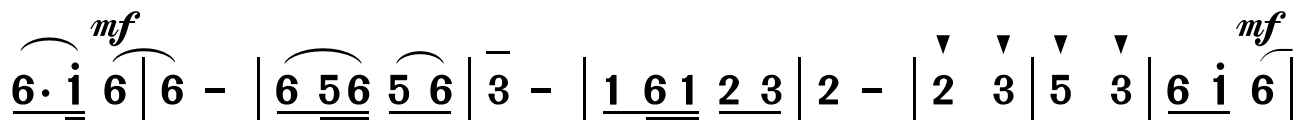
是不是你的家？是不是你的家？ D.C. 能不能作应答？
能不能作应答？



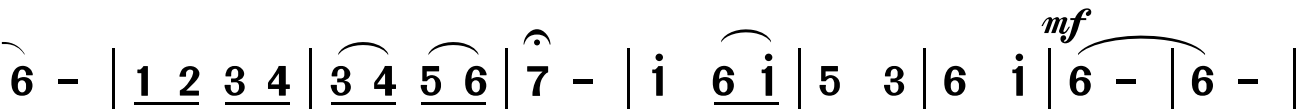
一生酷爱嘉陵江，六百里水路



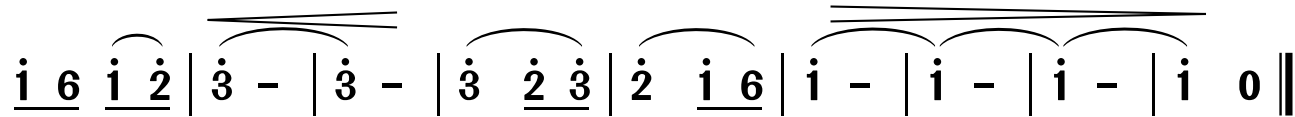
美如画。一朵浪花一片情，四季都在放光华。沿着



江流向东行，美丽的南充啊，顺风顺水向太阳，



风韵常留满天涯。顺风顺水向太阳，



风韵常留满天涯。