

1 **Allegro moderato** (♩ = 88)

Musical notation for exercise 1, first staff. The staff is in treble clef with a key signature of one sharp (F#) and a 4/4 time signature. The first measure contains a whole note chord consisting of four quarter notes: F#2, F#3, F#4, and F#5. The second measure contains a whole note chord consisting of three quarter notes: F#4, F#5, and F#6. The third measure contains a whole note chord consisting of three quarter notes: F#5, F#6, and F#7. The fourth measure contains a whole note chord consisting of three quarter notes: F#6, F#7, and F#8. The fifth measure contains a whole note chord consisting of three quarter notes: F#7, F#8, and F#9. The sixth measure contains a whole note chord consisting of three quarter notes: F#8, F#9, and F#10. The seventh measure contains a whole note chord consisting of three quarter notes: F#9, F#10, and F#11. The eighth measure contains a whole note chord consisting of three quarter notes: F#10, F#11, and F#12. The ninth measure contains a whole note chord consisting of three quarter notes: F#11, F#12, and F#13. The tenth measure contains a whole note chord consisting of three quarter notes: F#12, F#13, and F#14. The eleventh measure contains a whole note chord consisting of three quarter notes: F#13, F#14, and F#15. The twelfth measure contains a whole note chord consisting of three quarter notes: F#14, F#15, and F#16. The thirteenth measure contains a whole note chord consisting of three quarter notes: F#15, F#16, and F#17. The fourteenth measure contains a whole note chord consisting of three quarter notes: F#16, F#17, and F#18. The fifteenth measure contains a whole note chord consisting of three quarter notes: F#17, F#18, and F#19. The sixteenth measure contains a whole note chord consisting of three quarter notes: F#18, F#19, and F#20. The seventeenth measure contains a whole note chord consisting of three quarter notes: F#19, F#20, and F#21. The eighteenth measure contains a whole note chord consisting of three quarter notes: F#20, F#21, and F#22. The nineteenth measure contains a whole note chord consisting of three quarter notes: F#21, F#22, and F#23. The twentieth measure contains a whole note chord consisting of three quarter notes: F#22, F#23, and F#24. The notation includes blue fingerings (1, 2, 3) above the notes in the first two measures of each group.

Musical notation for exercise 1, second staff. The staff is in treble clef with a key signature of one sharp (F#). The first measure contains a whole note chord consisting of three quarter notes: F#4, F#5, and F#6. The second measure contains a whole note chord consisting of three quarter notes: F#5, F#6, and F#7. The third measure contains a whole note chord consisting of three quarter notes: F#6, F#7, and F#8. The fourth measure contains a whole note chord consisting of three quarter notes: F#7, F#8, and F#9. The fifth measure contains a whole note chord consisting of three quarter notes: F#8, F#9, and F#10. The sixth measure contains a whole note chord consisting of three quarter notes: F#9, F#10, and F#11. The seventh measure contains a whole note chord consisting of three quarter notes: F#10, F#11, and F#12. The eighth measure contains a whole note chord consisting of three quarter notes: F#11, F#12, and F#13. The ninth measure contains a whole note chord consisting of three quarter notes: F#12, F#13, and F#14. The tenth measure contains a whole note chord consisting of three quarter notes: F#13, F#14, and F#15. The eleventh measure contains a whole note chord consisting of three quarter notes: F#14, F#15, and F#16. The twelfth measure contains a whole note chord consisting of three quarter notes: F#15, F#16, and F#17. The thirteenth measure contains a whole note chord consisting of three quarter notes: F#16, F#17, and F#18. The fourteenth measure contains a whole note chord consisting of three quarter notes: F#17, F#18, and F#19. The fifteenth measure contains a whole note chord consisting of three quarter notes: F#18, F#19, and F#20. The sixteenth measure contains a whole note chord consisting of three quarter notes: F#19, F#20, and F#21. The seventeenth measure contains a whole note chord consisting of three quarter notes: F#20, F#21, and F#22. The eighteenth measure contains a whole note chord consisting of three quarter notes: F#21, F#22, and F#23. The nineteenth measure contains a whole note chord consisting of three quarter notes: F#22, F#23, and F#24. The twentieth measure contains a whole note chord consisting of three quarter notes: F#23, F#24, and F#25. The notation includes blue fingerings (1, 2, 3) above the notes in the first two measures of each group. The word "ten." is written above the staff between the fourth and fifth measures.

3 ten.

1 3 2 1 2 1

4 ten.

3 1 3 1

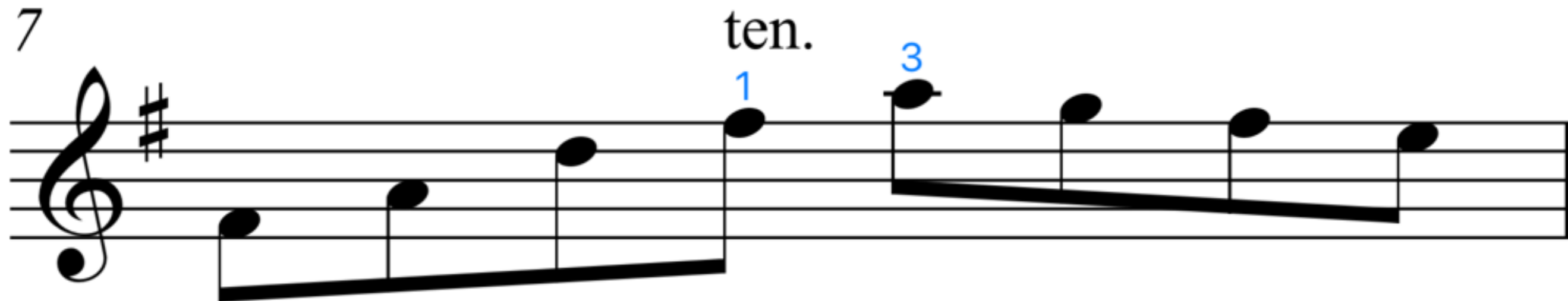
5

1 1 2 3

6



7



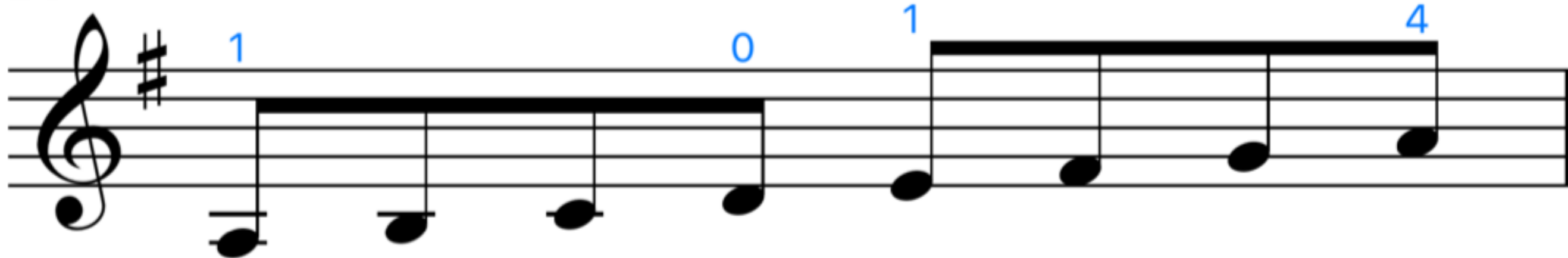
8



9



10



11



Musical notation for exercise 11, featuring a treble clef, a key signature of one sharp (F#), and a 2/4 time signature. The piece consists of two measures. The first measure contains a half note chord (F#4, A4) with a blue '2' above it. The second measure contains a half note chord (B4, D5) with a blue '2' above it.

12



Musical notation for exercise 12, featuring a treble clef, a key signature of one sharp (F#), and a 2/4 time signature. The piece consists of two measures. The first measure contains a half note chord (F#4, A4) with the instruction 'sim.' above it. The second measure contains a half note chord (B4, D5) with the instruction 'ten.' above it. A blue '1' is above the first note and a blue '4' is above the second note.

13



Musical notation for exercise 13, featuring a treble clef, a key signature of one sharp (F#), and a 2/4 time signature. The piece consists of two measures. The first measure contains a half note chord (F#4, A4) with a blue '1' above it. The second measure contains a half note chord (B4, D5) with a blue '4' above it.

14 ten.



Musical notation for exercise 14, featuring a treble clef, a key signature of one sharp (F#), and a ten-measure phrase. The notation includes fingerings: 2, 3, 4, and 2. The first four measures show a sequence of notes with fingerings 2, 3, 4, and 2. The last two measures show a sequence of notes with a ten-measure phrase indicated by 'ten.' above the staff.

15



Musical notation for exercise 15, featuring a treble clef, a key signature of one sharp (F#), and a ten-measure phrase. The notation includes a fingering of 4. The first four measures show a sequence of notes with a fingering of 4. The last two measures show a sequence of notes with a ten-measure phrase indicated by 'ten.' above the staff.