

## 问君何日能再来

1 = C  $\frac{4}{4}$ 

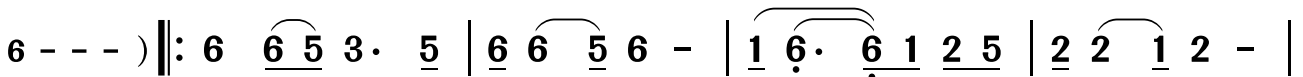
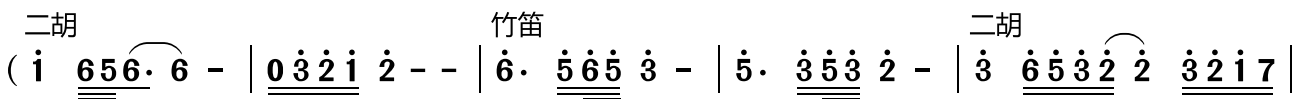
(根据谢采妘演唱音频记谱)

司徒明词

江 风曲

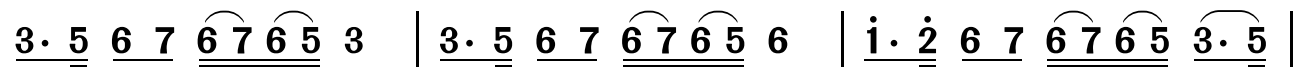
岭南印象制谱

♩ = 60

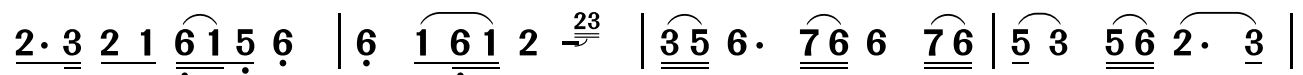


1.3. 当初相逢笑颜开，如今离别又愁怀。

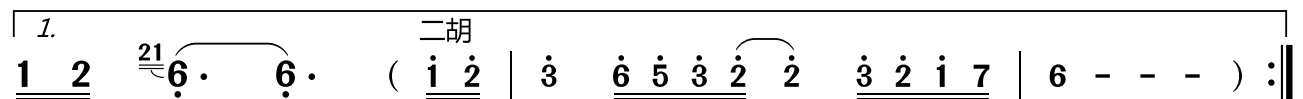
2. 人生离合天安排，筵席迟早总要散。



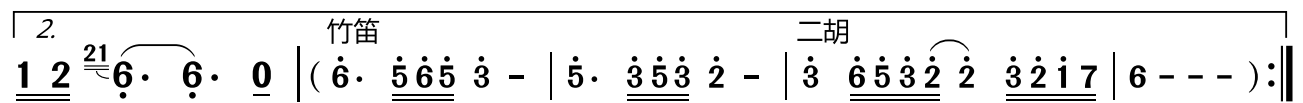
临行依依难分舍，问君何日能再来。桃花溪边春难买，  
流水无情花有意，问君何日能再来。有缘再会会无期，



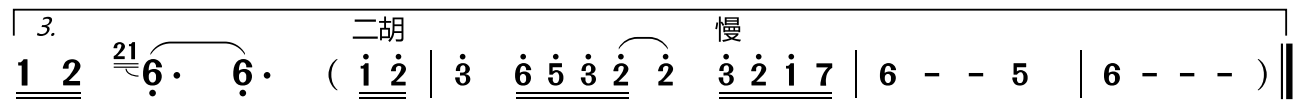
姻缘河上情多伴。此去难止相思泪，问君何日  
旧地重游到蓬莱。但愿此日早来临，搏前花就



能再来。



笑颜开。



能再来。