

## 漫漫红尘谁把我眷顾

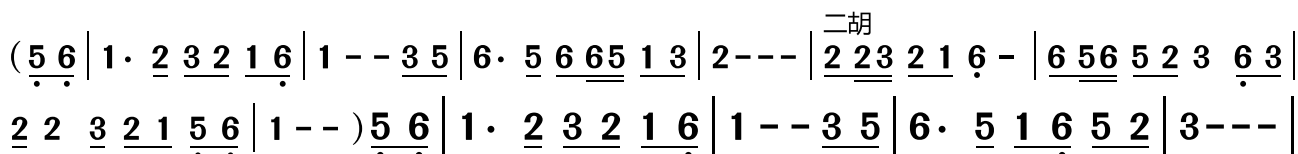
1 =  $\flat$ B  $\frac{4}{4}$ 

(根据李宁静演唱音频记谱)

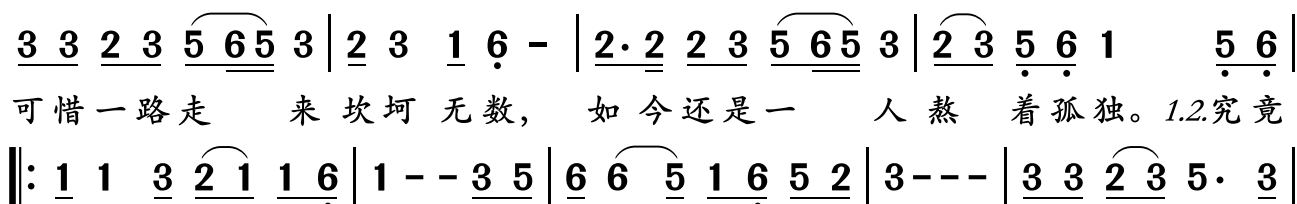
申光惠词曲

岭南印象制谱

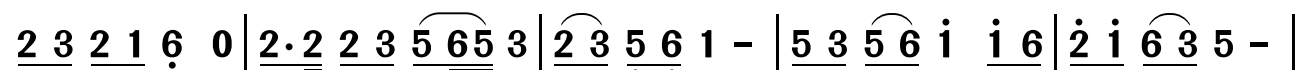
♩ = 84



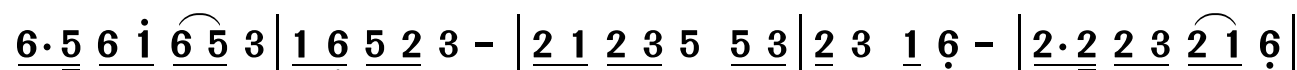
以为踏上爱情这条路，就能寻到自己的幸福，



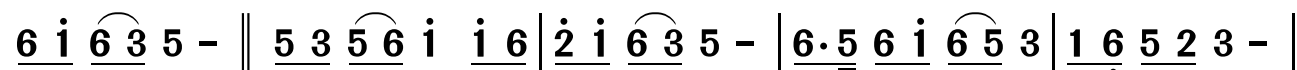
谁才是我的归宿，孤单生活何时能结束，辛酸眼泪在



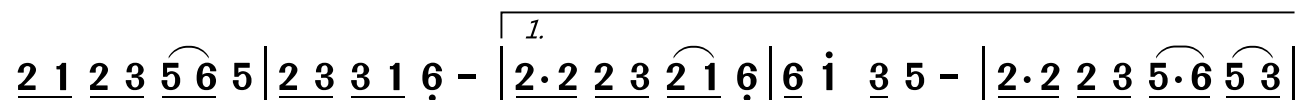
夜里藏不住，一次一次让我心痛到哭。漫漫红尘谁会把我眷顾，



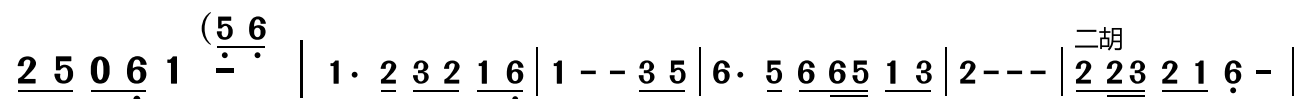
别再让我迈开流浪的脚步，多想有个人对我用心呵护，爱情路上陪我



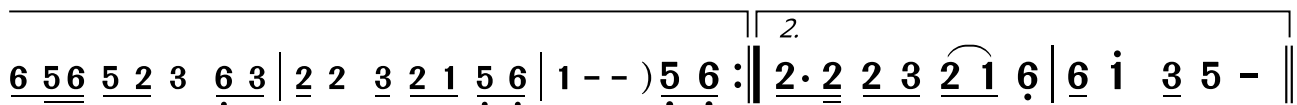
朝朝暮暮。\*漫漫红尘谁会把我眷顾，别再让我陷入寂寞的底谷，



如果我的苦楚你心疼在乎，情路漫漫一起相互挽扶，情路漫漫一起

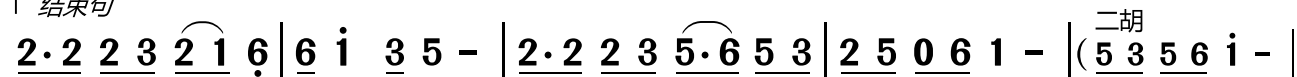


相互挽扶。



2.究竟情路漫漫一起相互挽扶。D.S.

| 结束句



情路漫漫一起相互挽扶，情路漫漫一起相互挽扶。

